

# The Expanding World of Nanofabrication – an update from NanoFabrication Kingston

June 16, 2022

Good day,

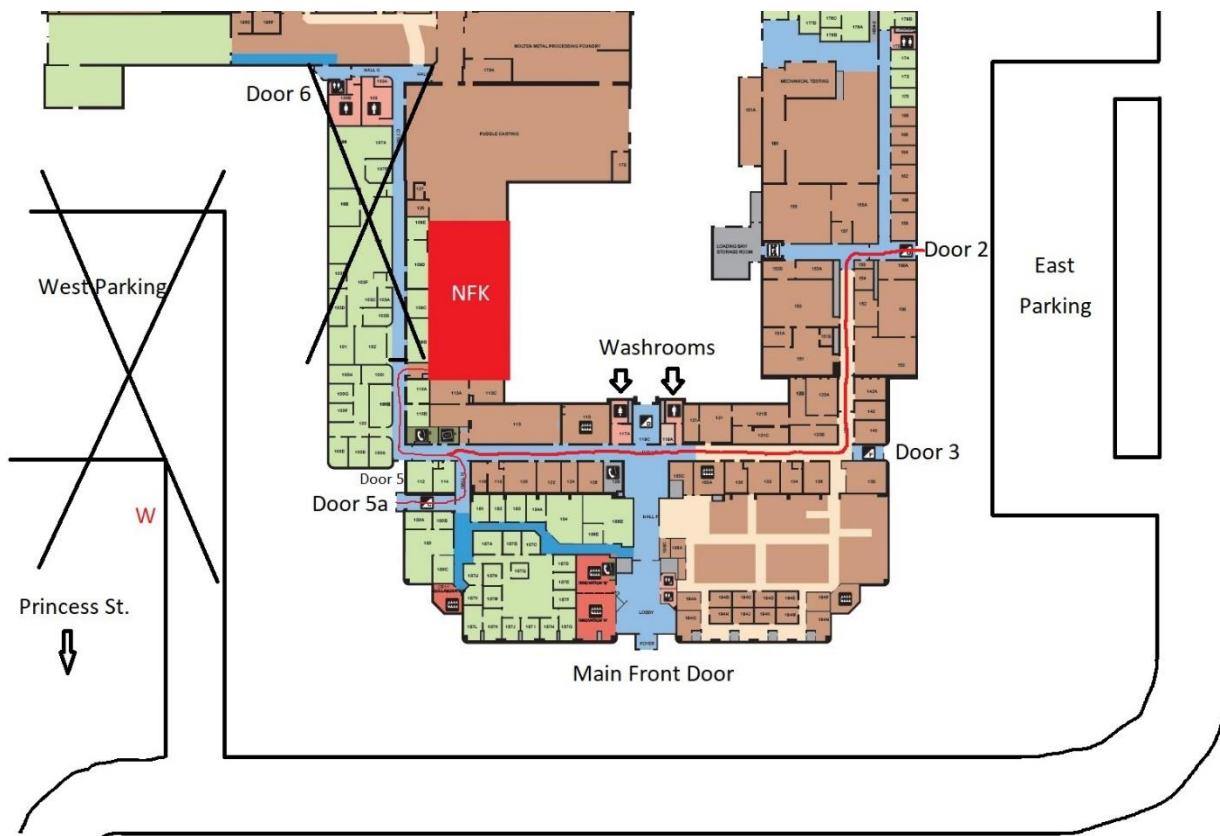
You are receiving this important update as a user of NFK, as a supervisor of a user, or as someone who requested to receive these updates.

## Changes due to construction

Effective immediately, the West parking lot at 945 Princess St. has been designated as part of the construction site and will be off-limits for NFK users and guests. If you are driving, please use the East parking lot. You may enter by Door 2, which will be the Main Entrance during construction, or by Door 3.

If you are walking or cycling, you may continue to use Door 5A in the southwest corner of the building, which will be accessible again by the start of next week.

See the map below for details:



## Equipment news

### *Probe Station:*

A Cascade Summit 11000 series probe station has been installed and configured for sheet resistance measurements. A big thanks to the Department of Physics for bringing the probe station to NFK!

### *Laser Micromachining System:*

The extractor fan motor has been replaced and the fume extraction system is fully operational again.

See you at the lab!

Graham Gibson

Lab Operations Manager, NanoFabrication Kingston  
Queen's University  
945 Princess St.  
Kingston, ON  
K7L 0E9  
[gibsong@queensu.ca](mailto:gibsong@queensu.ca)

*If you want to opt out of receiving messages containing optional content, please contact [gibsong@queensu.ca](mailto:gibsong@queensu.ca). You will continue to receive messages with required content until you complete the NFK Check-Out procedure. Contact [gibsong@queensu.ca](mailto:gibsong@queensu.ca) for more details.*