

The Expanding World of Nanofabrication – *an update from NanoFabrication Kingston*

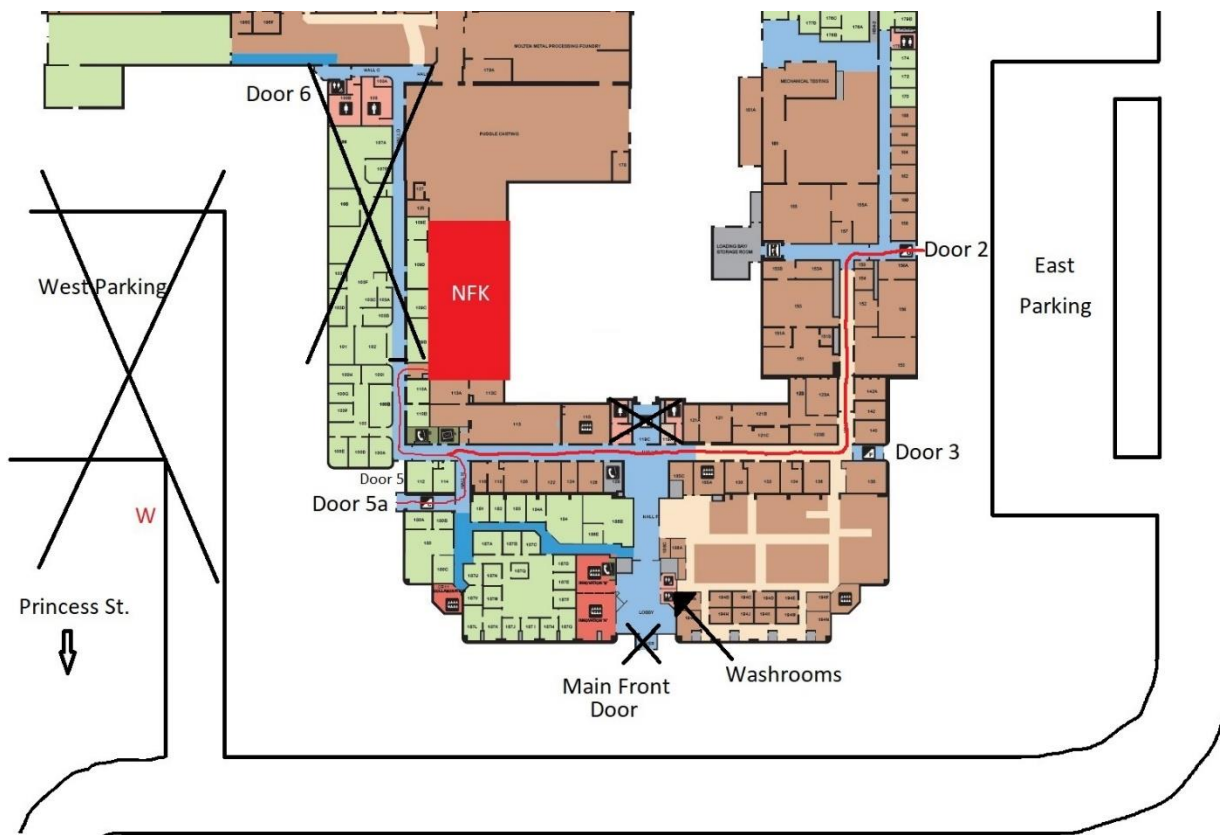
September 12, 2022

Good day,

You are receiving this important update as a user of NFK, as a supervisor of a user, or as someone who requested to receive these updates.

Changes due to construction

Effective immediately, the main washrooms by the stairwell are closed permanently. Until the new washrooms are built, you may use the washrooms by the south entrance (old main entrance) as indicated on the map below. Parking and entry locations have not changed.



Lab computer network

We have set up a network connecting all the online computers at NFK, so now you can transfer data and design files to and from any of our computers via the PC in the entrance room.

Equipment news

Evaporator:

The vacuum gauge has been replaced and the evaporator is working normally again.

Ellipsometer:

The spectroscopic ellipsometer that was previously in the Physics Dept. has been moved to NFK. We have installed it and demonstrated that it is working. It is now in a commissioning phase as we determine how best to manage it. You are welcome to schedule time to try using it during this period, but staff support will be minimal and you will need to know what models to use and how to interpret the data yourself.

COVID-19

Note that NFK follows the [guidance of Queen's University](#) for COVID-related changes to operations. Currently, mask and vaccination mandates have been suspended, though we encourage everyone to get the recommended boosters and will provide ASTM level 3 masks at NFK to anyone who chooses to wear one. Please do not come to the lab if you are feeling sick! If you have symptoms, tested positive, or come in contact with someone with COVID, use the screening module in the SeQure App and follow the steps provided.

See you at the lab!

Graham Gibson

Lab Operations Manager, NanoFabrication Kingston
Queen's University
945 Princess St.
Kingston, ON
K7L 0E9
gibsong@queensu.ca

If you want to opt out of receiving messages containing optional content, please contact gibsong@queensu.ca. You will continue to receive messages with required content until you complete the NFK Check-Out procedure. Contact gibsong@queensu.ca for more details.